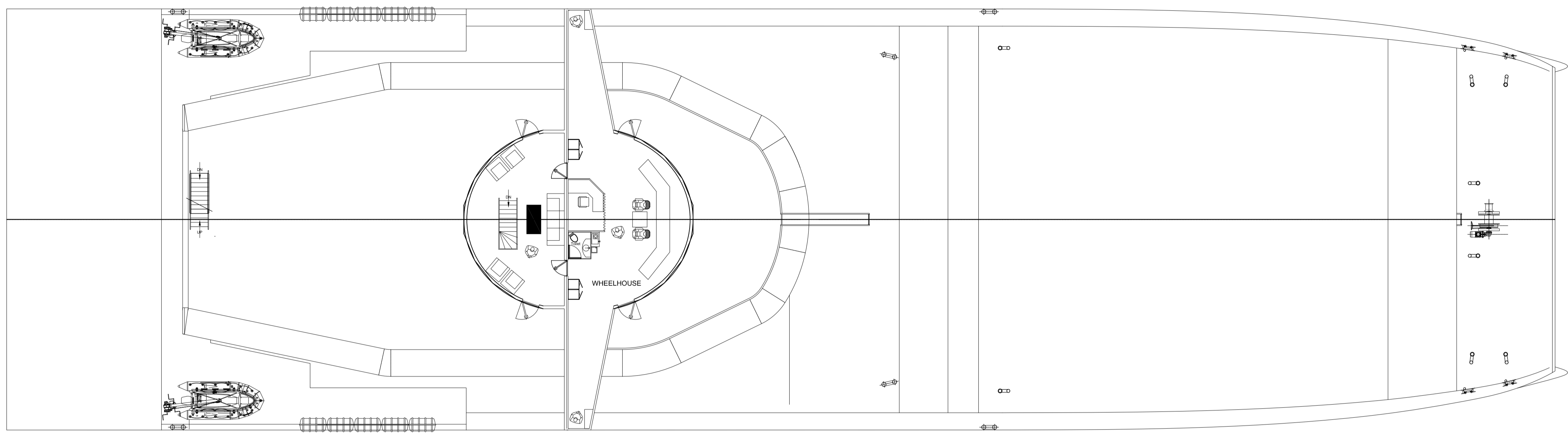
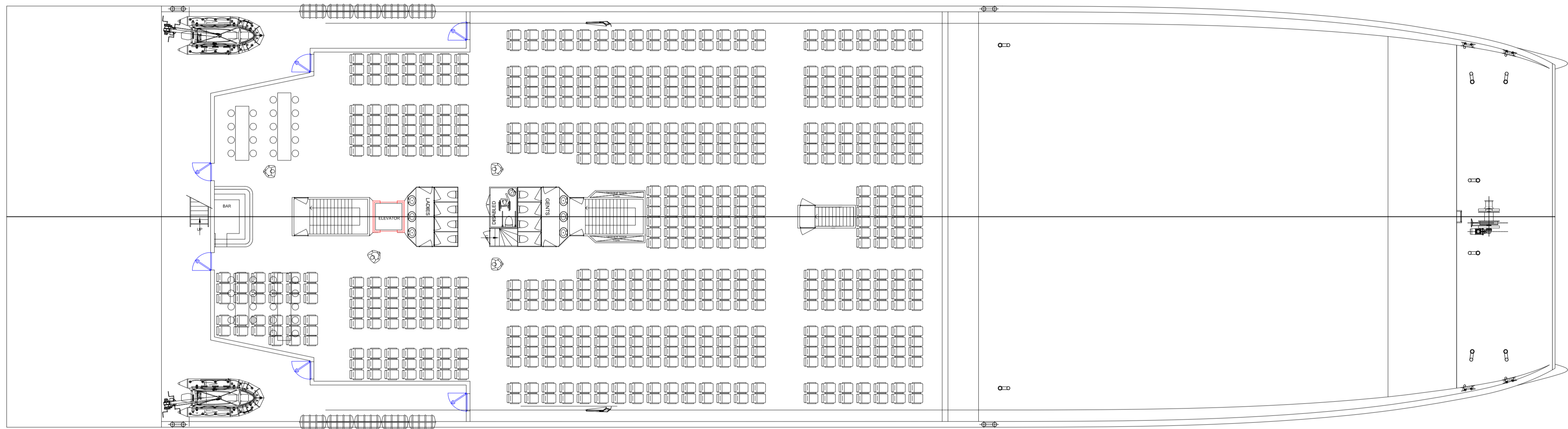


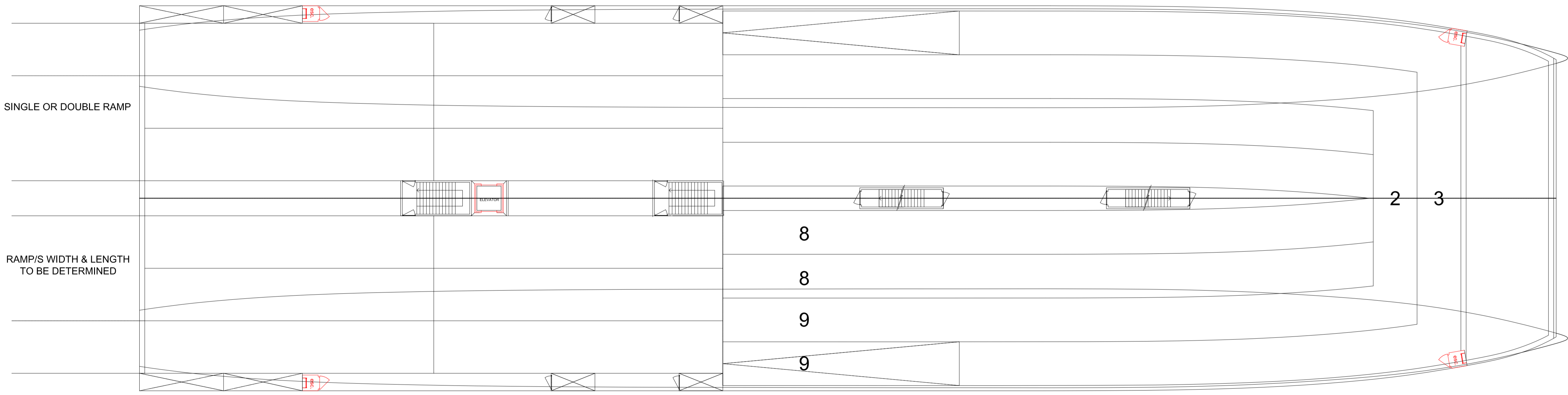
PROFILE



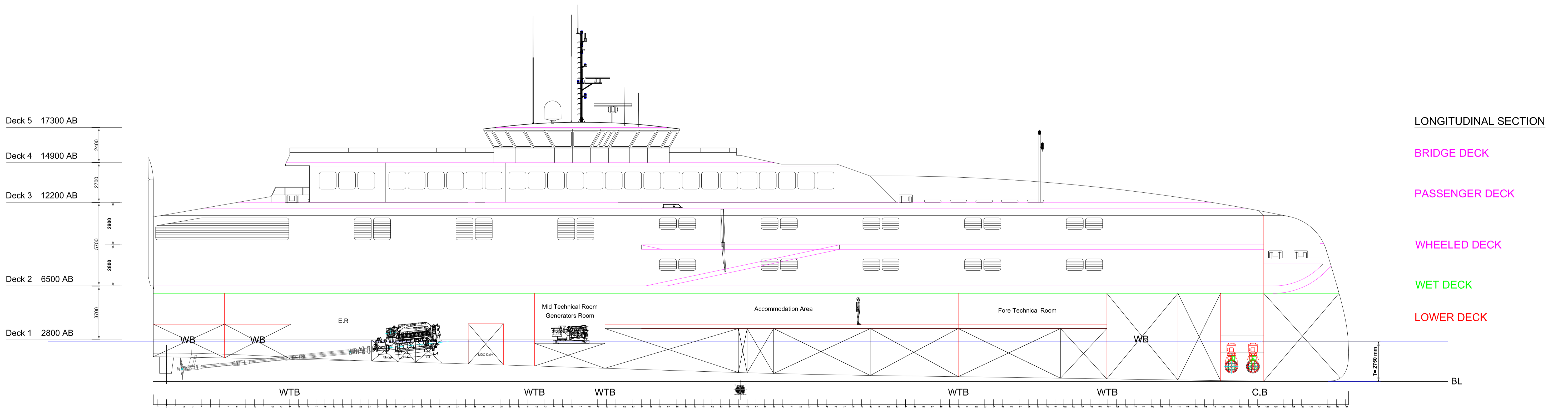
BRIDGE DECK - 14900 AB



PASSENGER DECK - 12200 AB
610 PAX
(676 IF SEATS INSTEAD OF STOOLS AFT)



WHEELED DECK - 6500 AB
190 CARS OR
12 LORRIES + 146 CARS (2 DECKS)



LONGITUDINAL SECTION

BRIDGE DECK

PASSENGER DECK

WHEELED DECK

WET DECK

LOWER DECK

MAIN PARTICULARS

LOA 81.52 m
Breadth moulded 22.00 m
Depth to FBD Deck 6.50 m
Design Static Draught 2.75 m

Generators 3x 150 kW

Engines 2x 2350 kW
or 4x 1174 kW
Propulsion 2/4x Fixed Pitch Props 1.500mm
Thrusters 4x Bow tunnel thruster 225 kW
F.O Capacity 60.000 litres
F.W Capacity 10.000 litres
Max. Speed 22 knots
Cruising Speed 18 knots
Range 1400 nm

COMPLEMENT

Crew 10
Passengers 610 / 676

TOTAL PAX 610 / 676

VEHICLES
ONLY CARS 190
TRUCKS & CARS 12 TRUCKS + 146 CARS

Rev.	Date	Author	Revision Subject	Approved	Date
			Project: HSC80 ROPAX FERRY		Drawing N: 001
			Title: General Arrangement [610 PAX-190 CARS]		Date: 14/02/20
			For: -		Project N°: 527
			Format: A0	Scale: 1:150	Author: MP
					Revision: 00
©Marcelo Penna Engineering					Av. Icària 143-1ª 1º 08005 Barcelona

THE CONTENTS OF THIS PLAN OR DOCUMENT, AND/OR ANY OTHER INFORMATION SHOWN OR DESCRIBED IN IT, ARE OF THE EXCLUSIVE PROPERTY OF M.P. MARCELO PENNA S.L. AND THEY ARE PROTECTED BY THE EUROPEAN AND INTERNATIONAL COPYRIGHT LAWS, WHEREAS THEY CAN NOT BE USED, COPIED OR REPRODUCED IN ANY WAY WITHOUT THE PREVIOUS WRITTEN CONSENT OF M.P. ENGINEERING.